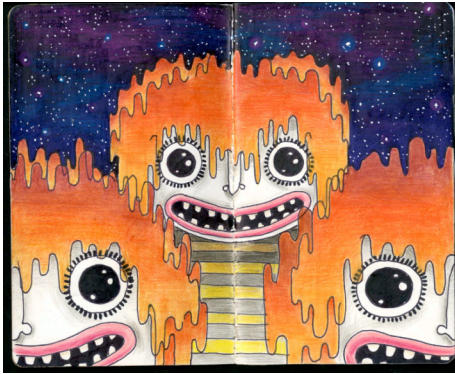


t r a n s f o r m e r

FOR IMMEDIATE RELEASE
March 18, 2011

CONTACT: Victoria Reis/Elizabeth England
info@transformergallery.org or 202-483-1102

Transformer is proud to present the opening of *Sketch*, an exhibition investigating creative processes and the development of artists' works through sketchbooks.



Sketch
April 2 – May 7, 2011

OPEN HOUSE: Saturday, April 2; 1-7pm
Meet and greet throughout the day with featured *Sketch* artists

ARTIST TALKS: Saturday, April 2; 2-3pm
Thursday, April 7 & 28; 5-6pm

DRAW-INS with Reuben Breslar: Saturday, April 23 & 30; 2-6pm

Sketch features sketchbooks created by 16 DC area emerging artists, invited to participate in this exhibition for their diverse artistic backgrounds and varied approaches to their favored mediums. *Sketch* artist sketchbooks will be displayed on shelves installed throughout Transformer, for audiences to flip through or spend more leisured time with in the gallery.

Artists featured in *Sketch* include: Erin Boland, Yelena Bryksenkova, Mei Mei Chang, Bradley Chriss, Oreen Cohen, John Deamond, Stephen Gibson, Elizabeth Graeber, Felipe Goncalves, Khanh Le, Emilia Olsen, Chul Beom Park, Adrian Parsons, Ben Tolman, Jenny Walton, and Stephanie Williams.

As part of *Sketch*, Transformer is hosting a variety of programs exploring creative processes, including artist talks and *Draw-Ins* led by DC area based artist Reuben Breslar. *Draw-In* is a community workshop to encourage the fostering of creative growth in a social environment. In addition to open drawing sessions with Reuben, Transformer is inviting the public to create their own sketches directly on our walls, to be displayed side by side with the innovative sketchbooks of the participating *Sketch* artists.

In tandem with *Sketch*, Transformer is pleased to co-present with Brooklyn based Art House Co-op and Hillyer Art Space, the DC stop of The Sketchbook Project taking place at Hillyer Art Space on April 15 & 16, 12-6pm. Featuring almost 10,000 sketchbooks created by artists from a variety of nationalities and backgrounds, as with *Sketch* at Transformer, each artist in The Sketchbook Project was provided a 5½" x 8½" Moleskine sketchbook and encouraged to insert their visual interpretation, style and media into each sketchbook creation. The Sketchbook Project will be touring nationally until the end of July when the sketchbooks will enter the permanent collection of The Brooklyn Art Library where they will cataloged and available for public view. Additional details can be found at: www.arthousecoop.com/projects/sketchbookproject, and www.artsandartists.org/hillyer

SKETCH EXHIBITION HOURS: Wednesday – Saturday, 1 – 7pm & by appointment.

Image: Spread Detail of Sketchbook from Felipe Goncalves, 2011

t r a n s f o r m e r is a Washington, DC based 501 (c) 3 artist-centered non-profit visual arts organization, providing a consistent, supportive, and professional platform for emerging artists to explore and present experimental artistic concepts, build audiences for their work, and advance their careers. A catalyst and advocate for contemporary artists and emergent expression in the visual arts, Transformer connects and promotes emerging visual artists within regional, national and international contexts through exhibition and programs partnerships with artists, curators, commercial galleries, museums and other cultural institutions. Transformer's 2010/2011 exhibition series and programs are supported by: The Andy Warhol Foundation for the Visual Arts, The CrossCurrents Foundation, The DC Commission on the Arts and Humanities/NEA, The Morris & Gwendolyn Cafritz Foundation, The National Endowment for the Arts' Access to Artistic Excellence award, and The Visionary Friends of Transformer.

1404 P Street NW Washington DC 20005 | (202) 483-1102 | www.transformergallery.org