

t r a n s f o r m e r

Transformer FlatFile List of Works



Tatiana Gulenkina
#19, 2014
C type paper (Kodak Endura Matte)
16 x 19 in.



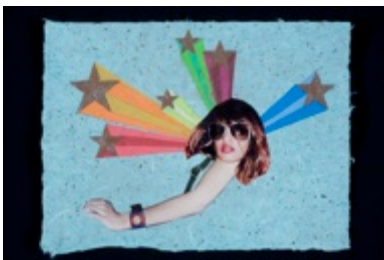
Stephen Gibson
(Clockwise from top left) *Clock Tower*, *CASH For GOLD*,
Jewelry and Loan, and *ABAL, INC.*, 2012
Gouache on paper
3 x 3 in.



Becca Kallem
Eye and Cross, 2014
Acrylic, tempera, spray paint, graphite and collage
11 x 9 in.



Becca Kallem
Skull Is It, 2014
Tempera, graphite and collage
6.5 x 7 in.



Lisa Marie Thalhammer
Lizard with Stars, *Strap & Watch*, 2009
Pencil & collage on handmade Korean paper
9.5 x 12.5 in.

t r a n s f o r m e r



Matt Hollis
Inner Garden, 2014
Magazine collage on bristol
14 x 17 in.



Tang
Untitled (dog), 2013
Ink, gouache, and spray paint on acid free mat board
8 x 10 in.



Tang
Untitled (snake), 2013
Ink, gouache, and spray paint on acid free mat board
8 x 10 in.

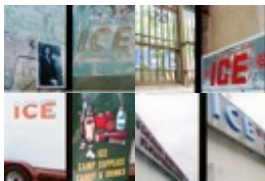


Jessica Cebra
Retouched, 2014
Collage on paper
9 x 11.75 in.

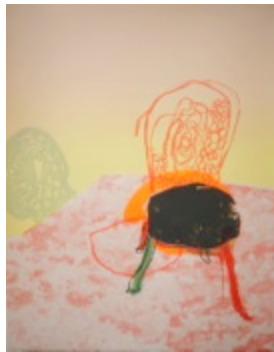
t r a n s f o r m e r



Aaron Hughes
Untitled (Torn), 2013
Ink on Bristol
12 x 19 in.



Cynthia Connolly
Selections from *Traces of a Hidden World: Elements*,
2009-2011
Half-frame color C-Prints
4 x 6 in. each

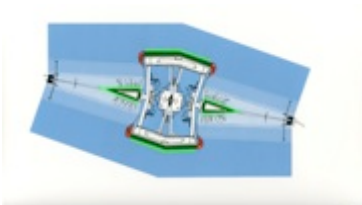


Jameson Magrogan
Building a Chair, 2013
Screen print on paper
15 x 20.5 in.



Evan Hume
Fairfield, Ohio – October 27, 1963, 2011
Archival pigment print
11 x 17 in.

t r a n s f o r m e r



Jessica Van Brakle
Quality Attachments, 2014
Acrylic and ink on paper
9.5 x 16 in.



Bradley Chriss
Visions from the End of the World 3, 2009
Gouache on paper
9 x 4 in.



Mariah Anne Johnson
Aloha 2, 2008
Acrylic and gouache on paper
12 x 9 in.



Bonner Sale
To be Free of the Shackles of this Mortal Coil, 2013
Gouache and pencil on Reeves BK
11 x 15 in.

t r a n s f o r m e r



Katherine Mann
Litterfall 5, 2014
Silkscreen and ink on paper
20 x 14 in.



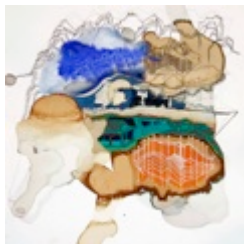
Max Basch
D#020, 2013
Ink on paper
10.5 x 9.5 in.



Max Basch
D#006, 2013
Ink on paper
6.5 x 5.5 in.

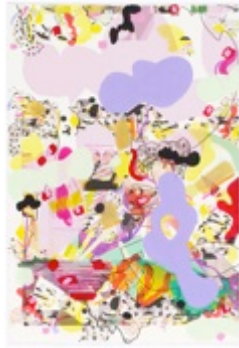


Jason Edward Tucker
(Marshall) X, 2013
Collage
9 x 7 in.



Mei Mei Chang
Untitled 1, 2012
Mixed media on paper
11 x 11 in.

t r a n s f o r m e r



Amy Boone-McCreesh
Topography II, 2014
Mixed media, collage and inkjet print on Rives BFK paper
22.5 x 15.5 in



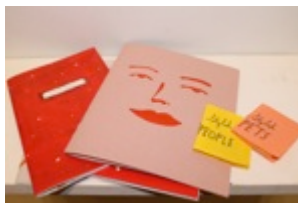
Amy Hughes Braden
Tiny Heads Perpetuate and Unjust System, 2014
Acrylic on paper
8 x 9.5 in.



Amy Hughes Braden
Anna Leaves, 2013
Pencil on paper
11 x 8.5 in.



Kristina Bilonick
Imagined Captions, 2014
Screen print on paper
12 x 16 in.



Elizabeth Graeber
Faces, A Coloring Book of People, Your Things, Poker Hands, Stylish People, & Stylish Pets, 2014
Zines
Varied sizes

t r a n s f o r m e r



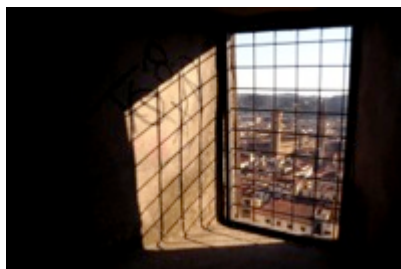
Ziad Nagy
Bird Party, 2014
Screen print on paper
14 x 19.5 in.



Adam Dwight
Dead Dove, 2013
Digital print
5.75 x 8 in.



John Deardourff
Charlie Don't Surf, 2014
Screenprint on paper
20 x 20 in.

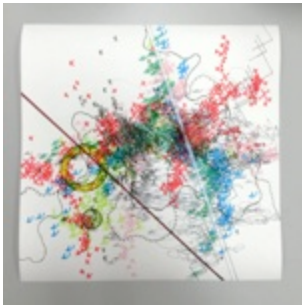


Georgie Payne
Duomo (hangover), 2012
Archival inkjet print
13 x 19 in.



Jo Ann Block
Dancing Goat, 2013
Digital collage
9 x 12 in.

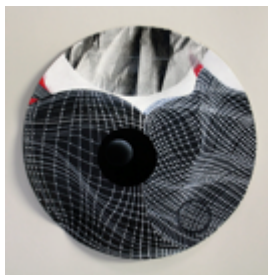
t r a n s f o r m e r



Allison Long Hardy
4.14.14 #49, 2014
Mixed media on paper
10 X 10 in.



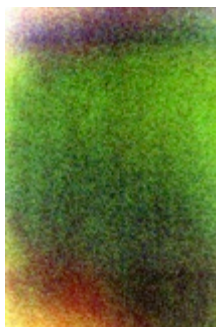
Natalie Cheung
Untitled, 2014
Silver Gelatin Chemigram
11x14 in.



Joan Belmar
1-Alchemy #30 (round), 2012
Acrylic, gouache and ink on paper
13.5 in. diameter



Joshua Yopsyn
Ronald, 2010
Digital C-Print from Film Scan
15 x 18 in.



Evan Hume
Majic Eye #4, 2012
Archival pigment print
12 x 18 in.

t r a n s f o r m e r



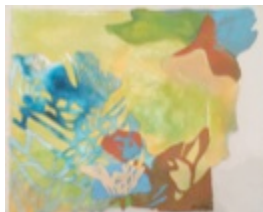
Erin Boland
Untitled 2, 2009
Pencil, watercolor, gouache on paper
14 x 9 in.



Cynthia Connolly
Lillipwaup Washington, 10-23-98, 2005
Gelatin silver print
Edition 3/7
11 x 14 in.



Ziad Nagy
Oulipo (2), 2014
Paint on loose canvas
8.75 x 13 in.

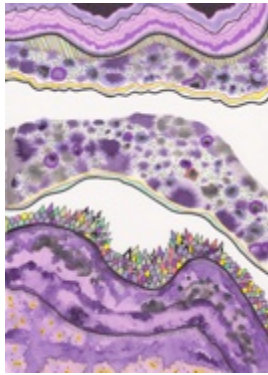


Alex Chiou
Untitled, 2014
Acrylic, ink and cut paper
8.5 x 10 in.



Dafna Steinberg
She Was Dead, 2014
Mixed paper collage
7.5 x 8.5 in.

t r a n s f o r m e r



Amy Boone-McCreesh
Stacks and Layers, 2013
Mixed media, collage and inkjet print on Rives BFK
paper
7.5 x 10.5 in.



Jenny Walton
Singles Faire #20, #22, #39, and #60, 2012
Mixed media on NYC metro card (#39, #60) and
Bristol board (#20, #22)
2.25 x 3.5 in.



Christine Buckton Tillman
Negative Spaces, 2014
Ink, gouache and watercolor on paper
11 x 14 in.



Amanda Burnham
Thud, 2010
Watercolor and gouache on paper
9 x 14 in.



Eames Armstrong
(untitled) persephone action, 2014
Watercolor, gouache and ink on watercolor paper
8 x 8 in.